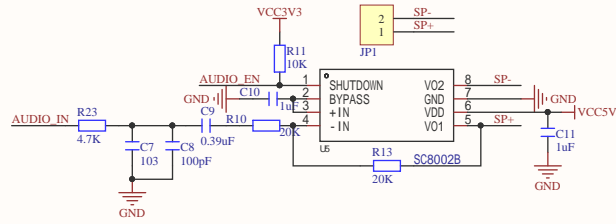
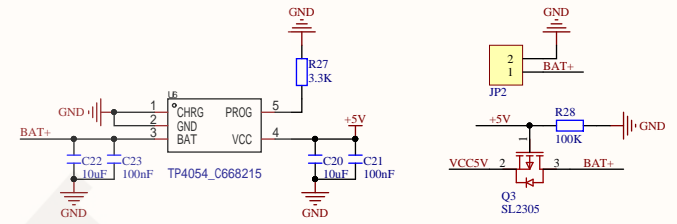


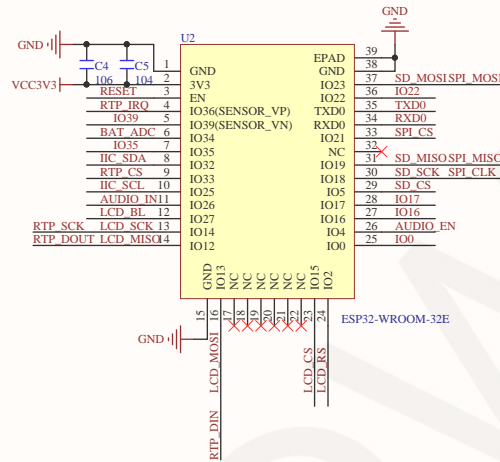
Type-C Interface circuit



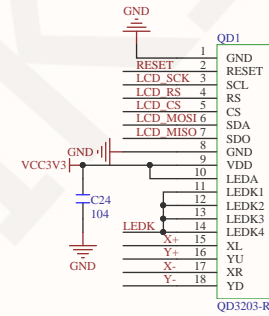
Audio power amplifier circuit



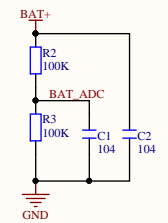
Battery charge and discharge management circuit



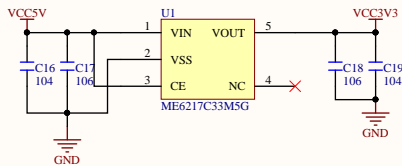
ESP32-WROOM-32E Main control circuit



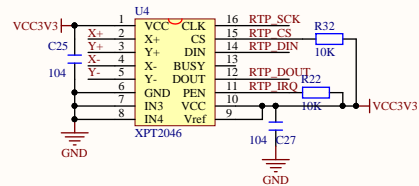
18P LCD panel wire welding interface



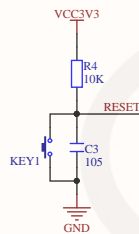
Battery level detection circuit



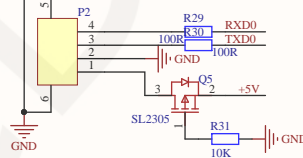
5V to 3.3V voltage regulator circuit



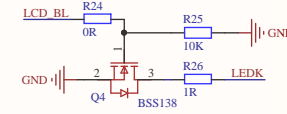
Resistive touch screen control circuit



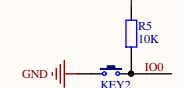
Key reset circuit



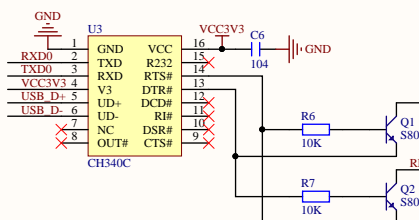
Serial port module interface circuit



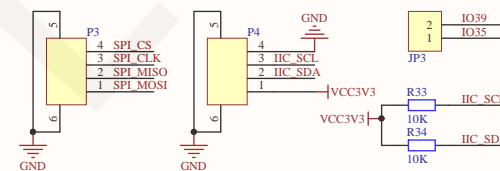
LCD screen backlight control circuit  
High level lighting backlight



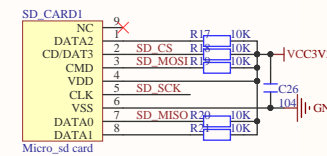
Download key circuit



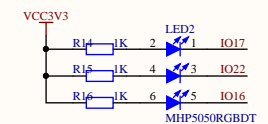
USB to serial port and one-click download circuit



Expanded IO and peripheral interface circuits



MicroSD card slot interface circuit



RGB three-color light control circuit  
Common anode, low level lit LED light

Title		3.2-inch ESP32-32E display module Schematic		Altium Limited	
Size: A3		Number:		E3, 12a Radnorrough Rd	
Date: 9/14/2024		Time: 9:51:51 AM		Franchs Forest	
File: G:\project\3.2inch\ESP32\尺寸图\3.2inch_		Sheet of		NSW	
ESP32-32E		resistance board		Australia 2086	
- 副本		SchDoc			